

**GEDA®**  
1500 Z/ZP



**GEDA®**  
ORIGINAL



▷ Innovations  
▷ Know-how  
▷ Up-to-date production technologies

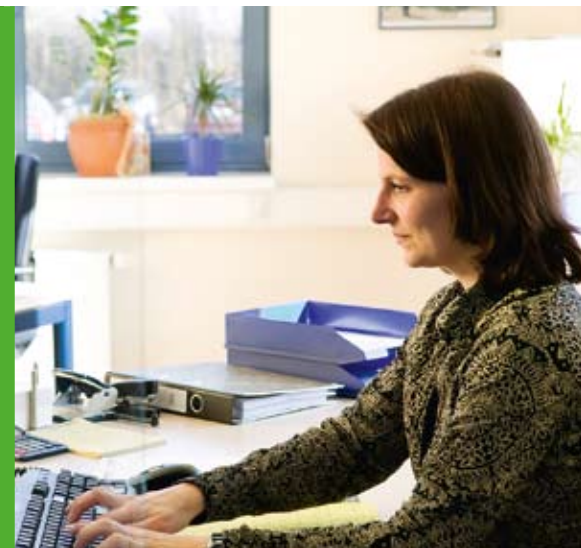


**GEDA®**  
ORIGINAL

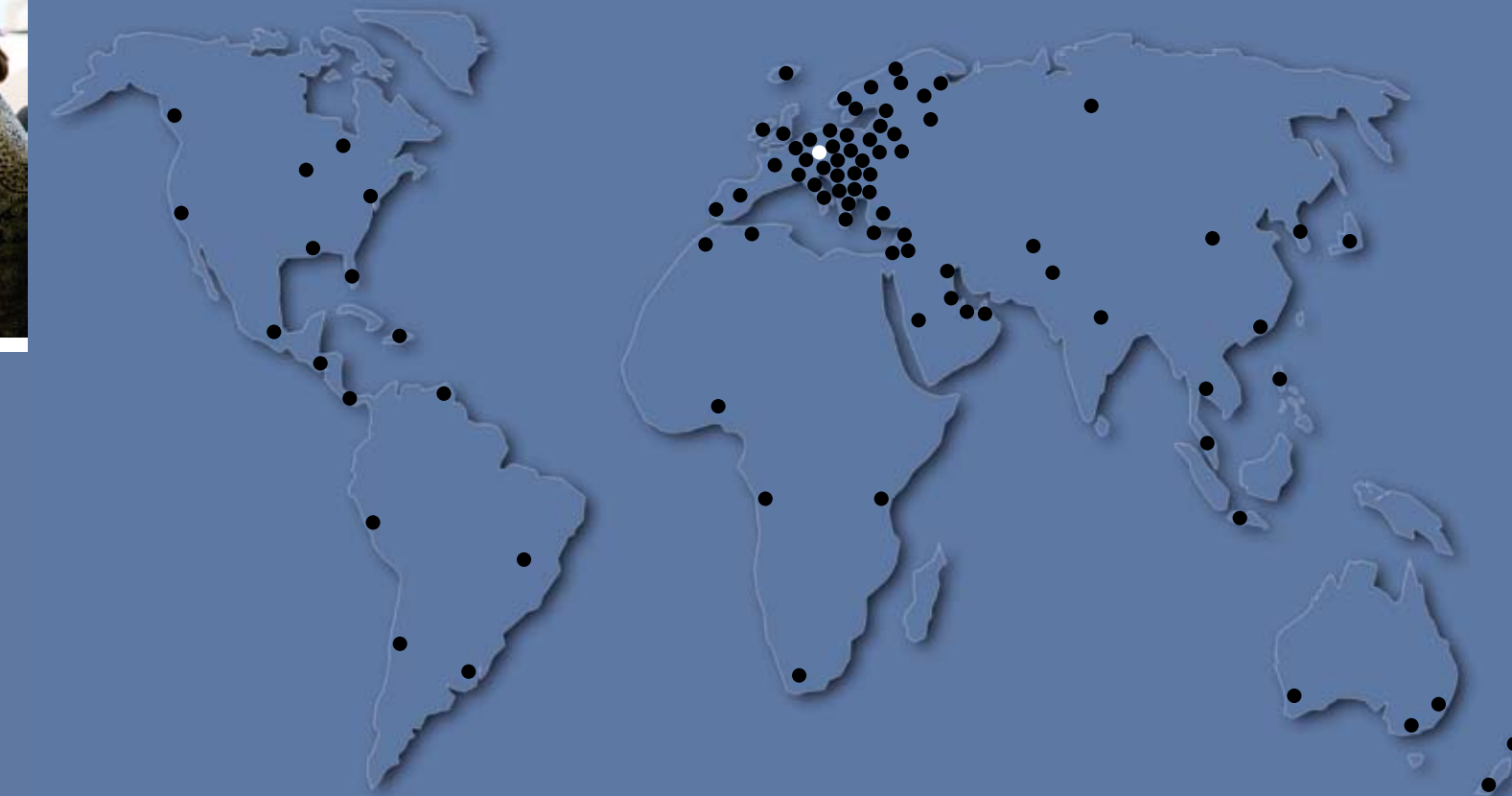


**GEDA®**  
**UNI-MAST**

An ingenious system: you can use the GEDA UNI-MAST for all GEDA rack and pinion hoists from 300 kg to 2000 kg load bearing capacity. **Flexible and economic working with only one mast system!**



**GEDA®**  
World-wide competence



Only put together the 1.5 m mast sections and screw them with captive screws and safety nuts.

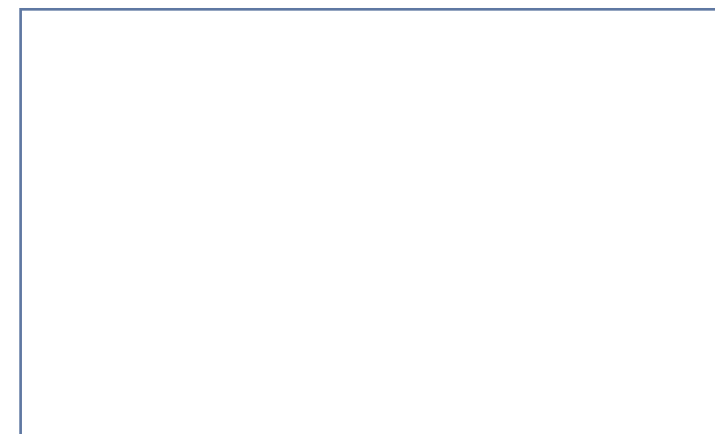


Easy loading and transport of all kinds of building material. Special feature: Ideally suited for transporting standard plasterboard panels.



**GEDA®**  
1500 Z/ZP

Your dealer:



**GEDA®**  
ORIGINAL

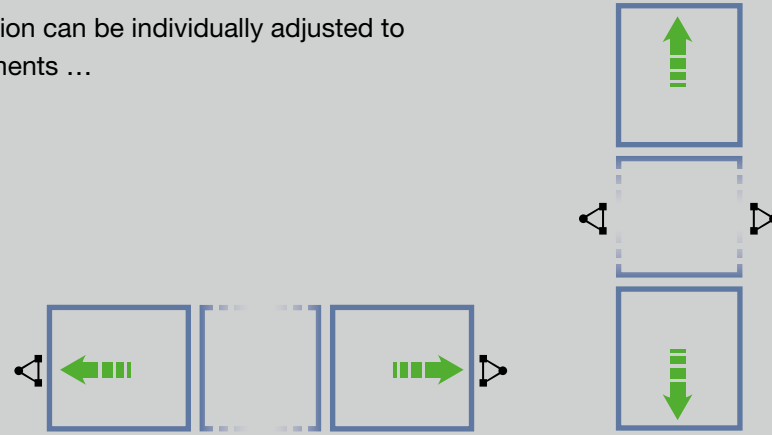
**GEDA-Dechentreiter GmbH & Co. KG**

Mertinger Straße 60  
D-86663 Asbach-Bäumenheim  
Phone +49 (0) 906 9809-0  
Fax +49 (0) 906 9809-50  
info@geda.de  
[www.geda.de](http://www.geda.de)

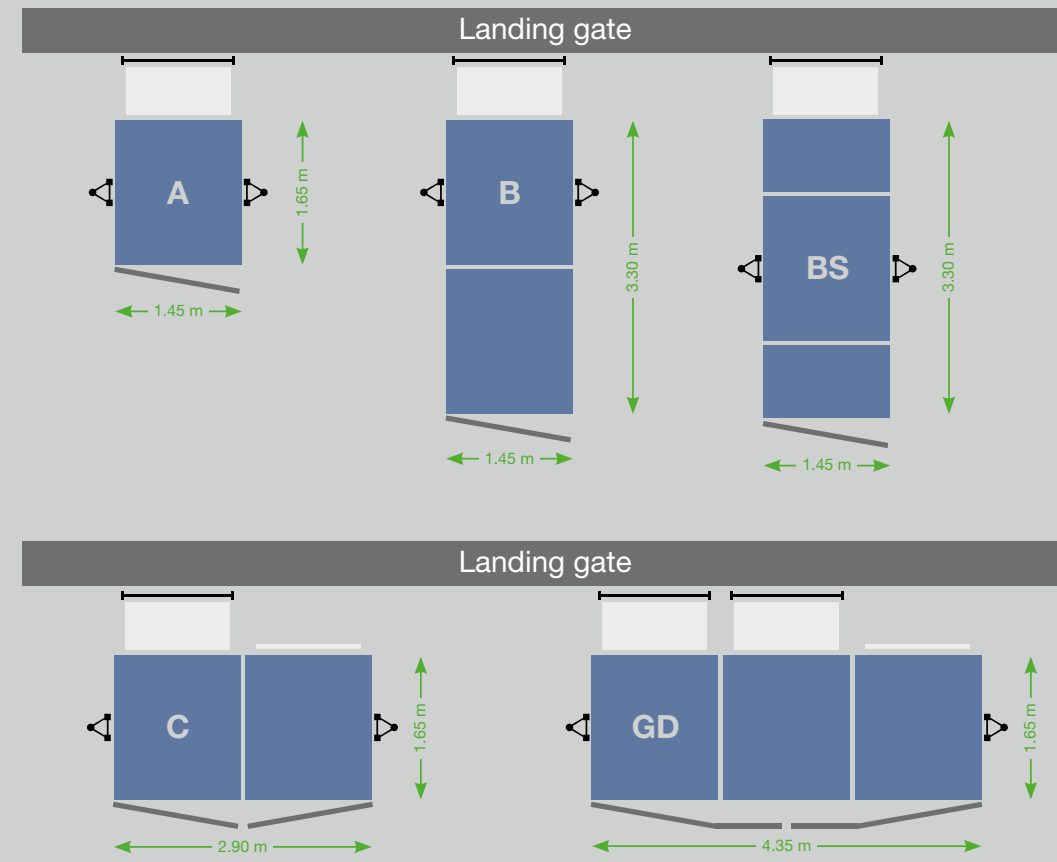
**GEDA®**  
1500 Z/ZP

Transport platform for persons and material

The foot section can be individually adjusted to your requirements ...



**Platform examples:**



**GEDA 1500 Z/ZP**

<b>Load capacity</b>	
Persons	max. 2.000 kg
Material	max. 2.000 kg
<b>Lifting height</b>	100 m
<b>Lifting speed</b>	12/24 m/min.
<b>Power connection</b>	2 x 3,0/6,1 kW/400 V/50 Hz

CE **GEDA®**  
ORIGINAL



**Your powerful partner for heavy loads and efficient work methods.**  
Numerous different platform versions mean the unit can be employed to optimum capacity on all construction sites.

- 1 Platform version I
- 3 Platform version BS with roof
- 4 Platform version B

